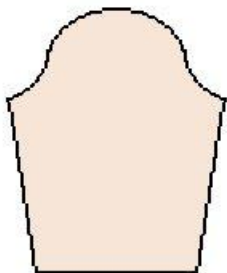
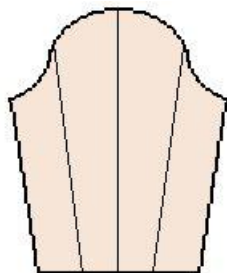


Easy Slash & Pouf Sleeves

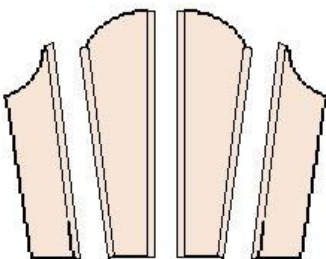
Ok, they're not easy enough for absolute beginners. Still, if you've ever sewn a set-in sleeve on a dress or shirt, you can do these sleeves.



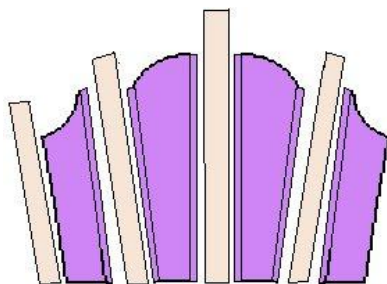
First, take an ordinary sleeve pattern, like this one.



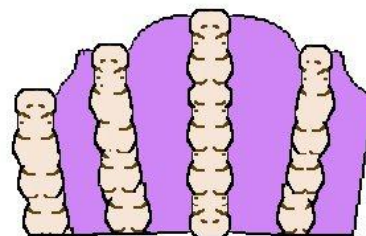
Cut it into four more or less equal pieces.



Lay each piece on the material and cut it out. Be sure to add 1/2" seam allowance along each side of the cuts you made.

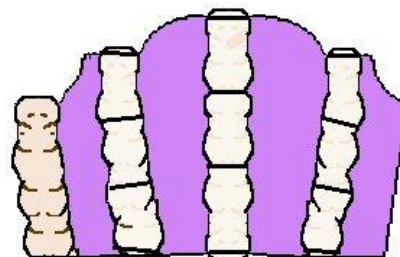


Cut four strips of contrasting color (I used white satin), each about 5" longer than the edge of the sleeve piece.



Gather both edges of each satin strip so it is the same length as the sleeve piece it will be attached to.

Sew the satin strips between the sleeve pieces. Leave one seam open so the sleeve will still lay flat. That will make the next step easier.



At the top and bottom of the satin strips, and at two or three points along each seam (shown as black lines here), pull the sleeve edges together tightly. I did this by starting at one sleeve edge, running a gathering stitch to the other sleeve edge (where the black lines are), then pulling the stitches as tight as possible.



Sew the last seam and pull the edges across that satin piece the same way. Continue with the sleeve as if it were an ordinary pattern. When the sleeve has been finished at the top and bottom edges (by lining it, or sewing it to a bodice, or whatever), sew a button at each of the places where it was pulled tight.